



# CHRISTMAS IN RUSSELL

**Ho, Ho, Ho!**

Santa Claus and his able helper Darcie (Elf Claus) joined forces once again to help spread some Christmas Cheer in Russell on Christmas Eve.

Each Christmas for the past 11 years, the Claus Family have give out a trolley full of presents (kindly donated by the community and local businesses) to everyone they come across around the streets of Russell.



In loving memory of Edi, our wonderful and sorely missed "Mrs Claus"



## Russell Christmas Parade

The Claus Family finished delivering presents just in time to join in the fun and festivities of the Russell Christmas Parade.

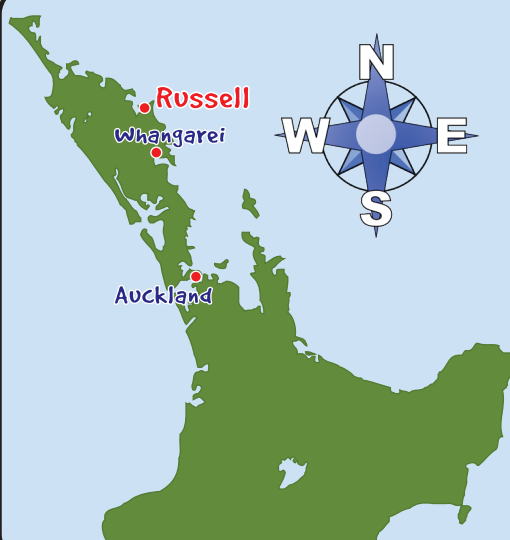
Bet you've never seen Santa using a digger to deliver his bag full of gifts before!

[Click Here to view more pictures from Christmas in Russell](#)










## Did you know?

- The original Maori name for Russell is **Kororareka**, which basically means "How sweet (to eat) is the penguin."  
"korora" - blue penguin, "reka" - sweet
- Russell became the first European settlement and sea port in New Zealand. It was also NZ's first Capital.
- Russell's Christ Church is NZ's oldest existing church, and was built by the missionaries in 1835.



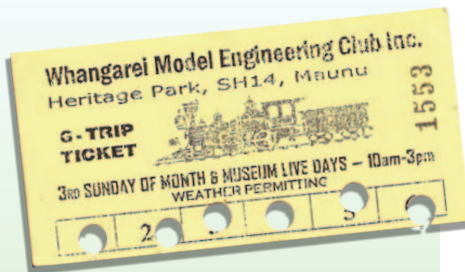
## RUSSELL DIGGER OPERATORS...

Darcie, Piki and Jayden demonstrate the skills they've been learning as budding digger operators during Mr Mac's visit to Russell.

# WOW!







# Model Engineering Association of NZ **2012 CONVENTION**

Thursday 5th - Monday 9th January, 2012

## What a great event for Whangarei!

Kids of all ages had a rare opportunity to see up close a huge variety of trains (steam, petrol, and electric) when the Whangarei Model Engineering Club hosted the Model Association of New Zealand Convention in early January.

The event is held every two years at different venues throughout NZ, and this time around we were lucky enough to have it in Whangarei!

During the convention, members of the public enjoyed train rides on the 1.2km track at Heritage Park, as well as checking out a range of miniature engines on display.



## Great Family Fun!

3rd Sunday of every month  
plus on Museum Live Days  
10am to 3pm at Heritage  
Park, SH14, Maunu

[www.wmec.org.nz](http://www.wmec.org.nz)



And, of course, Mr Mac  
was on hand with Little  
Cutie the mini excavator  
to give people a go at  
operating a digger.



James goes through a  
pre-start checklist...



... then checks with Murray  
everything's been done right.

**THANK  
YOU!**

Murray Adshead  
from  
**hirepool**  
WHANGAREI

We'd like to acknowledge  
Murray for his continued  
encouragement and support in  
working with our youth education.





AQUATIC CENTRE



# KIDS' HOLIDAY PROGRAMME

Mr Mac has been a regular helper at the Whangarei Aquatic Centre's Chill Out Kids' Holiday Programme for a good while now... and these summer holidays were no exception!

We began with a safety talk, and then some demonstrations before the kids got to check out Kerri-Ann the truck. They then got a chance to get behind the controls of "Little Cutie" the Goughs Cat digger!

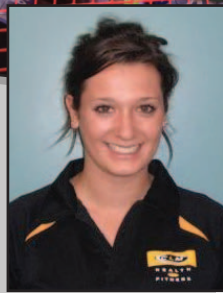
**Cool!** Everyone listened hard, acted responsibly and worked safely... WELL DONE KIDS!

Here's a few of their comments -

"I enjoyed having a turn on the digger."

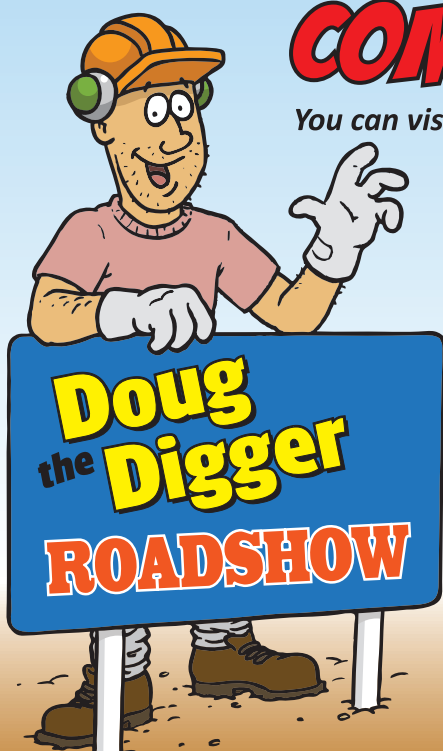
"I liked moving the stick up & having to balance it on another stick."

"Wow! It was really easy to use Little Cutie the digger!"



"I thought the day was awesome! The kids were so excited to have a go on your digger. I would recommend Doug the Digger to anyone... a great experience for the kids and I'm sure they will keep it with them forever."

Michaela Darwent - Programme Coordinator



[www.dougthedigger.co.nz](http://www.dougthedigger.co.nz)

## COME ALONG AND MEET US!

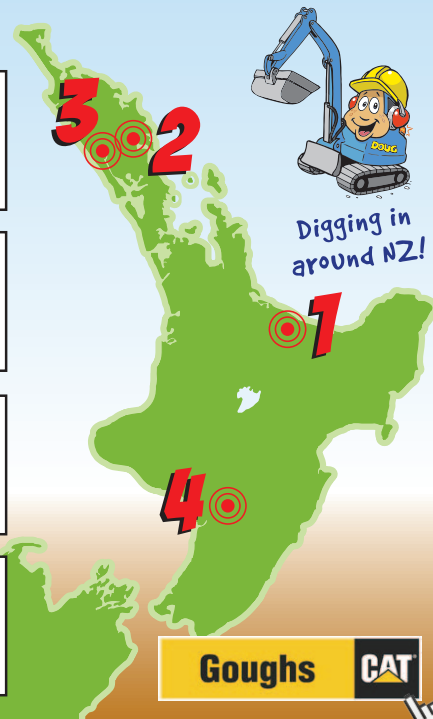
You can visit Doug the Digger Roadshow soon at -

**1** Saturday, 11th February, Te Puke  
NZ Contractor's Federation Regional Excavator Competition - Bay of Plenty  
(Te Puke A&P Show)

**2** Sunday, 26th February, Whangarei  
People in the Park - Kensington Park  
[www.northlandcommunityfoundation.co.nz](http://www.northlandcommunityfoundation.co.nz)  
for further information.

**3** Thur 1st - Sat 3rd March, Dargaville  
Northland Field Days - SH14, Dargaville  
[www.northlandfielddays.co.nz](http://www.northlandfielddays.co.nz)

**4** Thur 15th - Sat 17th March, Feilding  
NZ Contractor's Federation National Excavator Competition Finals  
(Central Districts Field Days, Feilding)



Digging in around NZ!

Goughs



Join each box on the left to it's matching one on the right.

WAITANGI

KORORAREKA

PAIHIA

RUSSELL

Place where the passenger ferry leaves from to take you to Russell.

Place where the Treaty of Waitangi was signed on February 6th, 1840.

Where you'll find NZ's oldest existing church (which was built in 1835).

This is the original Maori name for Russell (meaning "how sweet is the penguin.")

Use the code below to find the missing word (CLUE: it's another name for "Train")...

1 - L    3 - T    5 - I    7 - C  
2 - E    4 - M    6 - V    8 - O

1	8	7	8	4	8	3	5	6	2
---	---	---	---	---	---	---	---	---	---

colour in the picture and draw in your own background...

